

The sheer beauty of terracotta remains for many the use of natural kiln fired colours with the warmth, integrity and honesty of clay being simply and effortlessly what it is. We can offer a breath-taking range of natural fired clay colours of almost every hue and we regularly develop new colours for specific projects. The classic terracotta "red" for example is available in over twenty shades each one of which is distinctly different. We have provided a selection of our standard colours for you to view:



Naturrot



Ziegelrot



Hellrot



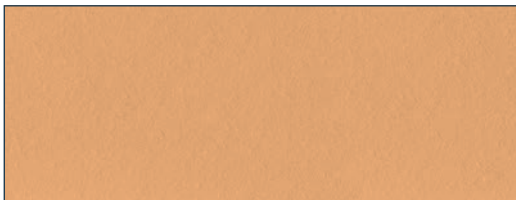
Orange



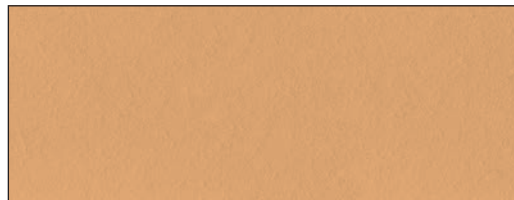
Rose



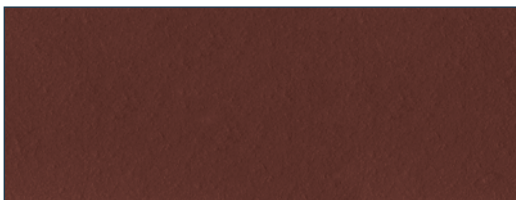
Pastellrot



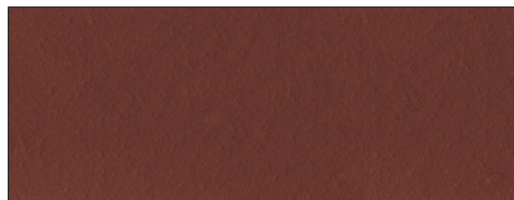
Lachs



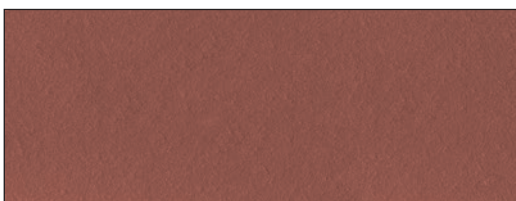
Bernstein



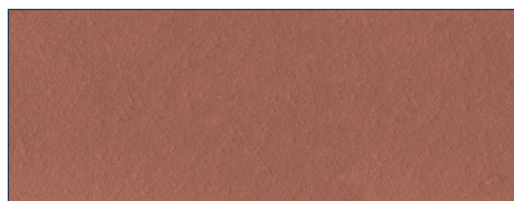
Karminrot



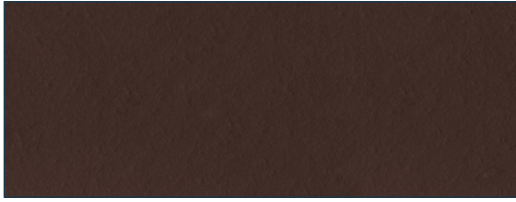
Rubinrot



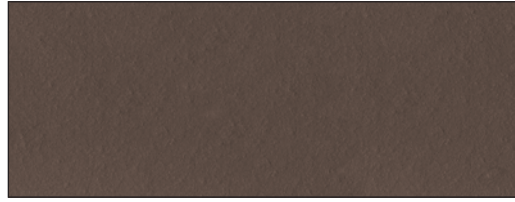
Dunkelrot



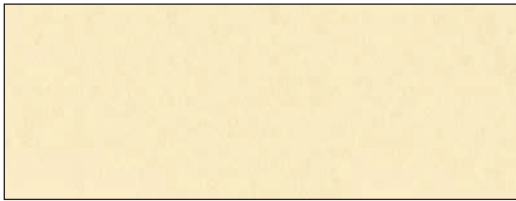
Oxydrot



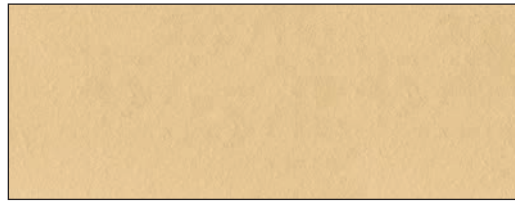
Kastanienbraun



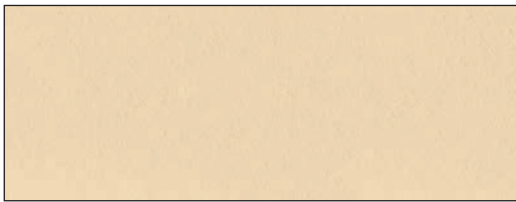
Braun



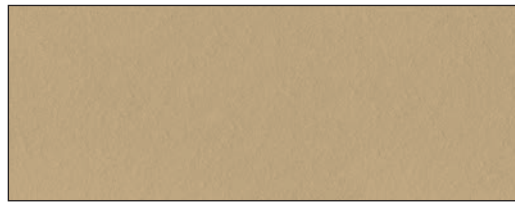
Sand



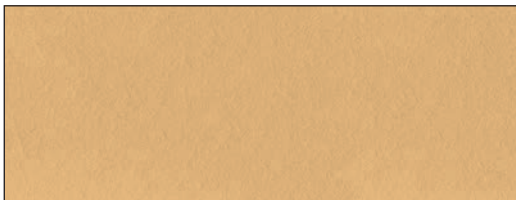
Champagner



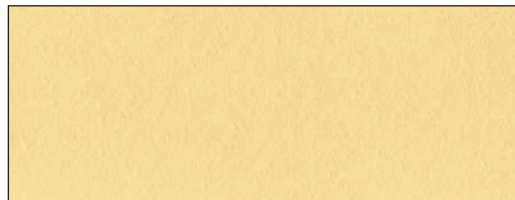
Beige



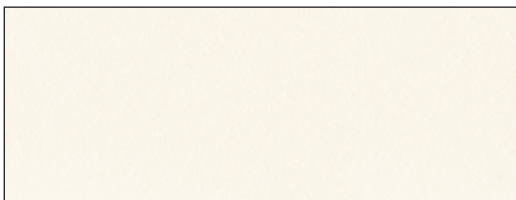
Terracottabeige



Terracottagelb



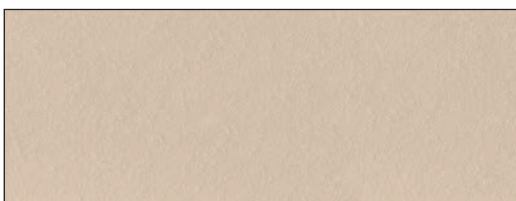
Safran



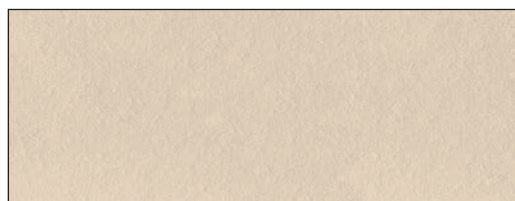
Elfenbein



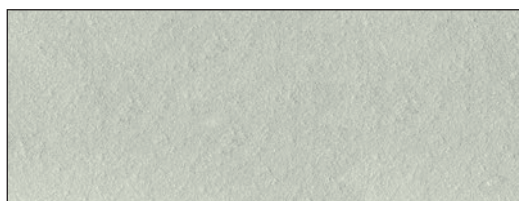
Perlweiss



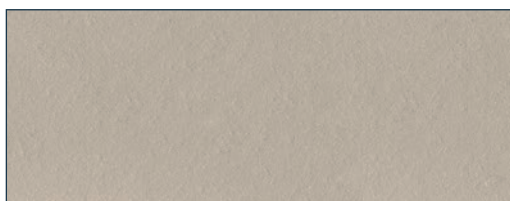
Creme



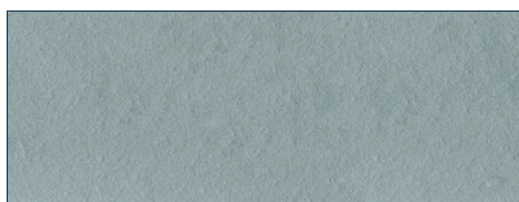
Hellgrau



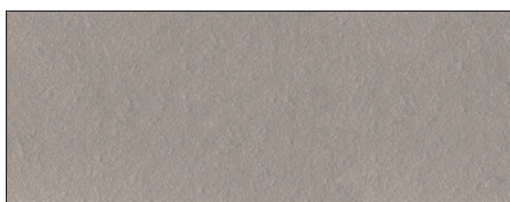
Blaugrau



Perlgrau



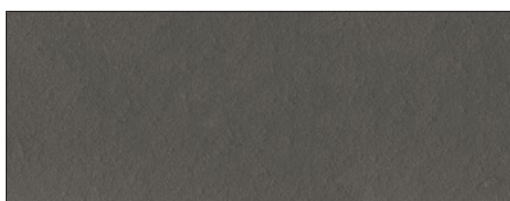
Lichtgrau



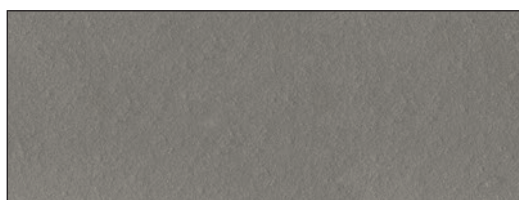
Titangrau



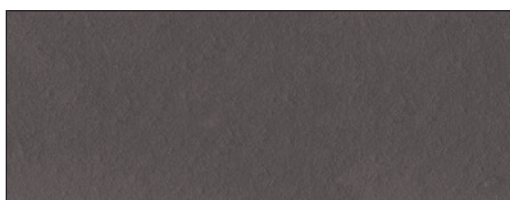
Quarzgrau



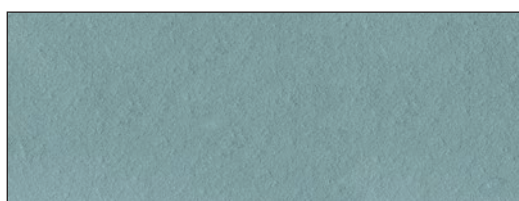
Graphitgrau



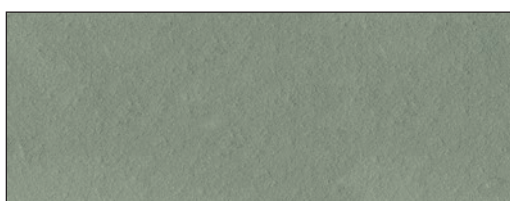
Eisengrau



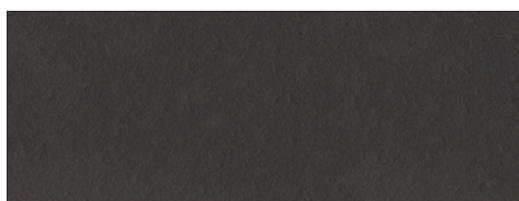
Vulkangrau



Türkis



Graugrün



Sinterschwarz